

Settlement Services Program

Women's Health in the South East



The Settlement Services Program (SSP) will assist women to access mainstream services, increase their knowledge of Australian society, and develop independence.

Eligibility criteria for the program:

- Permanent residents who have arrived in the last five years as humanitarian entrants or as family stream migrants with low English proficiency
- Residing in local government areas listed below:



WHISE is a not-for-profit, community-based service run by women for women, supported predominantly by the Department of Health and Human Services, Victoria.

WHISE advocates actively for the rights and health of women and girls. We provide expert health information, health promotion, settlement services and education for the female community within our region. With a feminist perspective underpinning all of our work, WHISE provides a voice for all women regardless of age, background, religion, culture or socioeconomic status.



facebook.com/whisewomen



twitter.com/whisewomen

Location

Suite 2, Ground floor
31 Princes Hwy, Dandenong 3175

Hours of Operation

Mondy to Friday 9.30am- 4pm

Contact

Phone: (03) 9794 8677
Email: whise@whise.org.au
Web: www.whise.org.au

The Settlement Services Program (SSP) is funded by the Australian Government Department of Social Services.



SETTLEMENT SERVICES PROGRAM

Strength in Dignity, Choice, Diversity and Justice



Home Visiting Program

Casework services are provided by females within the client's home.

Our Settlement Services Program will provide advice in areas such as:

- ✓ Making and attending appointments
- ✓ Finding suitable accommodation
- ✓ Navigating the public transport system
- ✓ Understanding Australian culture
- ✓ Companionship and support
- ✓ Referrals to other organisations
- ✓ Connecting individuals to community
- ✓ Forms and applications
- ✓ Liaising with utilities

Please note that we are **UNABLE** to provide casework services to male members of the household, English lessons, transport, counselling, immigration advice, childcare, legal advice, and non-settlement related services.

For any of the above services, we will make referrals to relevant agencies to ensure clients are assisted.

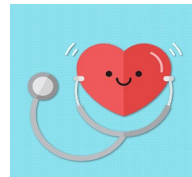
Telephone and onsite interpreters are available.

Information Sessions

Information sessions are provided to all women as well as SSP eligible clients.

Topics may include:

- myGov sessions
- Employment readiness
- Computer classes
- Women's wellness



Our Volunteers

Our services are provided by female volunteers, who are trained specifically to assist newly arrived and refugee women.

If you are interested in joining WHISE as a volunteer, we offer a four-day training program. Please contact us on (03) 9794 8677 to find out more, or visit www.whise.org.au



Women's Health

We will help guide an understanding of current health issues:

- Sexual & Reproductive Health
- Gender Equity
- Breast Health
- Nutrition and exercise
- Personal care
- Mental Health



Ask Us

For further information about any of the SSP services listed or to obtain a referral form for the home visiting program, please contact:

Marian or Shehani on (03) 9794 8677 or email msalvage@whise.org.au or scramer@whise.org.au

