



Cardinia Shire Council

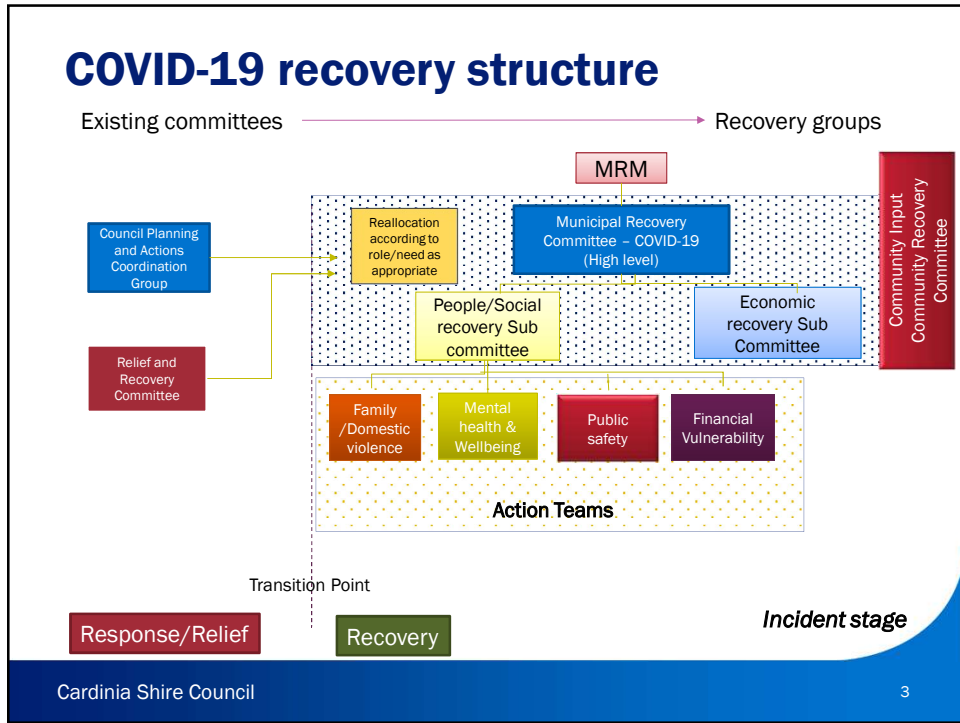
COVID-19 recovery structure

22 July 2020

Impact assessment

Not a traditional impact assessment

- Weekly feedback from Councils Committees
- Statistics from Councils dedicated COVID Help Hub
- Number and type of CRMs.
- Feedback from our vulnerable clients via phone conversations with the Emergency Support Team.
- Council's COVID-19 Community survey - aimed at identifying and measuring impacts on individuals and family groups within the Shire;
- The South East Regional Business Survey hosted by the Mornington Peninsula Shire, which identifies and quantifies issues relevant to the Cardinia business community and economic impacts;
- Council's COVID-19 Service Provider survey measuring the impacts on council business units and community groups at an organisational level.



Key focus areas

Action Team	Family/Domestic Violence	Mental Health and Wellbeing	Public Safety	Financial Vulnerability
Focus	Family and Domestic violence	Mental Health Social cohesion Homelessness Drugs Alcohol Gambling	Crimes against person and property Perception of Safety in community	Loss of income Food insecurity Material Aid insecurity

Cardinia Shire Council 4